



PERGEGE
ADVANCED SHADING SYSTEMS

Product Catalog

2020

WWW.PERGEGE.COM



About Us

Pergedge specializes in producing advanced solutions for space closure, offering a wide range of products that seamlessly blend functionality with aesthetics. With a focus on quality and service, the company collaborates with top engineers and designers to create practical, beautiful, and cutting-edge products in the market.

Pergedge utilizes high-quality raw materials and the most advanced manufacturing machines in the industry, ensuring durability, reliability, and high performance for every product. The company is committed to innovation and continuous improvement, investing in new technologies to create products that provide added value.

Pergedge's products are manufactured with strict adherence to high standards, ensuring that customers enjoy an excellent user experience, both at home and in business. Each product is designed to provide the perfect solution for space closure while maintaining a modern and elegant design.

Pergedge takes pride in being at the forefront of the industry and continues to lead the market with products that not only offer practical solutions but also enhance the design of any space.



Royal Bioclimatic *Pergola*

Description:

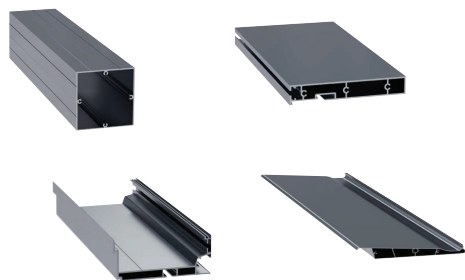
The Royal bioclimatic pergola represents the pinnacle of outdoor living, combining innovative design with advanced technology. This pergola allows you to enjoy your outdoor space throughout the year, adapting to changing weather conditions effortlessly.

Equipped with adjustable slats, the Royal pergola enables you to control sunlight and ventilation, creating the perfect atmosphere for relaxation or entertainment. Whether you want to bask in the sun or seek shade, the flexibility of the slats ensures optimal comfort at all times.

Crafted from high-quality, durable materials, the Royal pergola is built to withstand the elements, ensuring long-lasting performance and style. Available in various colors and finishes, it seamlessly integrates with any architectural style, enhancing the aesthetic appeal of your home.

Additionally, the pergola features an integrated drainage system to prevent water accumulation, keeping your outdoor area dry and functional. With the Royal bioclimatic pergola, elevate your outdoor experience and enjoy a harmonious blend of nature and modern living.

Specification:





BALI MODEL *Pergola*

DESCRIPTION:

The Bali model pergola offers an ideal solution for upgrading your outdoor space. With a modern and elegant design, the pergola allows you to enjoy nature in changing seasons. Featuring an advanced electric control system, you can manage the opening and closing of the cover at the touch of a button, ensuring comfort and security at all times.

The pergola is made from high-quality, weather-resistant materials, ensuring durability over time. You can choose from a variety of colors and styles, allowing you to perfectly match it to your home's aesthetics.

Additionally, the pergola is equipped with an advanced drainage system that prevents water accumulation and keeps the space beneath it dry. With the Bali model pergola, you are invited to enjoy summer in a blend of tranquility and style.

Specification:







COFFEE MODEL *System*

DESCRIPTION:

The Coffee Model System offers a unique opening experience that combines modern design with high functionality. The system is manufactured from high-quality materials, ensuring durability over time and excellent insulation.

This system features an easy-to-use opening mechanism, allowing users to effortlessly open and close the units. With its smart design, it creates an open space that allows natural light to flow in, enhancing the feeling of spaciousness.

Available in a wide range of finishes and colors, the Coffee Model System can be tailored to match the design style of any home or office. Additionally, it is well-suited for restaurants and cafes, providing an ideal solution for connecting indoor and outdoor spaces, allowing guests to enjoy the outdoor atmosphere while maintaining indoor comfort.

With this system, you can enjoy not only its aesthetic appeal but also the convenience and functionality it offers, making it an excellent choice for any space.





PVC CURVED *Pergola*

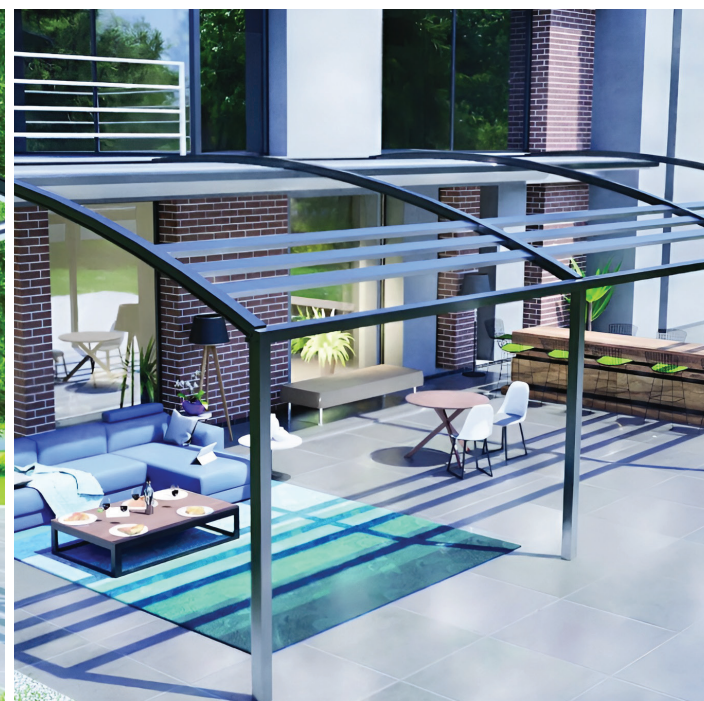
DESCRIPTION:

The PVC Curved Pergola is a stylish and durable outdoor structure designed to enhance your outdoor spaces. Made from high-quality PVC, it offers long-lasting resistance to the elements, ensuring it remains beautiful and functional over time. Its unique curved design adds a sophisticated touch, perfect for patios, gardens, or any outdoor area.

Ideal for providing shade or light rain protection, this pergola is lightweight yet strong, making it easy to install with minimal maintenance. The UV and weather-resistant properties of PVC ensure it withstands harsh outdoor conditions without deteriorating.

The low-maintenance surface is easy to clean, keeping it looking pristine year-round. Whether you're creating a cozy lounge area, a sheltered dining space, or a decorative garden feature, the PVC Curved Pergola is a versatile and attractive addition to your home.

Choose the PVC Curved Pergola for an elegant, practical, and durable outdoor solution that will enhance your space for years to come.





ZIP SCREEN MODEL *Shield*

DESCRIPTION:

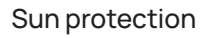
The Zip Screen Model Shield is the perfect solution for enhancing your outdoor spaces while providing comfort and protection from the sun. With its elegant design and versatile functionality, this product is ideal for patios, balconies, and gardens.

Made from high-quality, UV-resistant materials, the Zip Screen Model Shield ensures durability and long-lasting performance, even in the harshest weather conditions. Available in a range of colors and styles, it can be customized to suit your aesthetic preferences and seamlessly integrate with your outdoor decor.

The easy-to-use mechanism allows for quick adjustments, enabling you to control the amount of sunlight and shade you desire at any time. Whether you're hosting a gathering or simply enjoying a quiet afternoon, the Zip Screen Model Shield creates a cozy and inviting atmosphere.

With its combination of style, functionality, and durability, the Zip Screen Model Shield is the perfect addition to any outdoor setting, allowing you to enjoy the beauty of nature while staying protected from the elements.





Wind protection



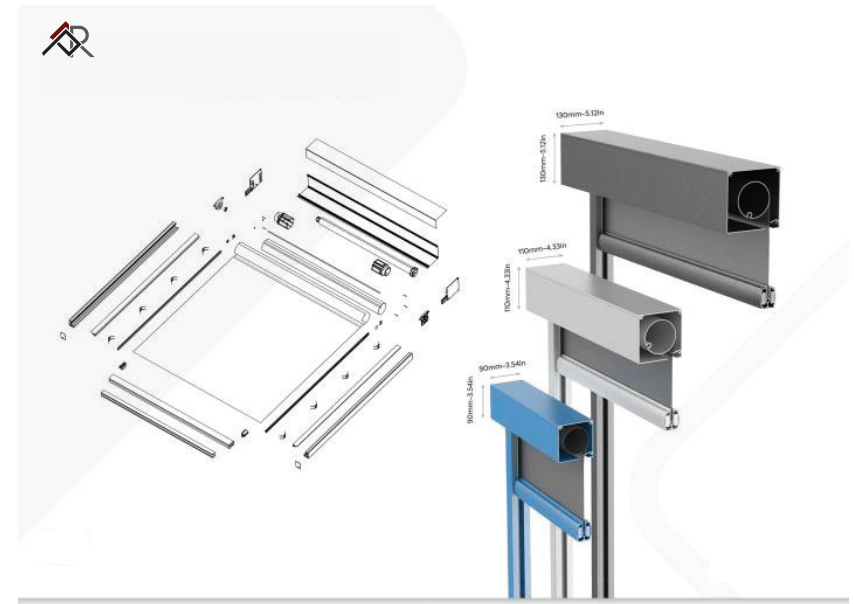
Solar energy solutions

Pest protection

Adjustable privacy



Wire system





FOLDING WINDOWS

Model Atid

DESCRIPTION:

The Folding Windows Model Atid offers a perfect blend of modern design and exceptional functionality. With their elegant lines and easy opening mechanism, these windows allow for natural airflow and maximum daylight, while maintaining an open feel in your space.

Constructed from high-quality and durable materials, the Atid windows are suitable for all types of buildings, from classic to contemporary styles. The advanced mechanism ensures convenient and safe use, with the ability to open at various angles, allowing you to adjust the window to your needs at any moment.

Additionally, the Atid windows provide excellent thermal and acoustic insulation, ensuring a comfortable and quiet living environment. With numerous customization options, you can choose the color, finish, and size that perfectly match your taste and home design.

Whether you're looking to upgrade your home or add a modern element to your office, the Folding Windows Model Atid is the perfect choice, combining style with advanced technology.





KALDOOR *Model*

DESCRIPTION:

The Kaldoor Model offers a sophisticated solution for opening and closing spaces, featuring an advanced sliding system that brings convenience and style to any environment. With its modern design, it successfully combines functionality with aesthetics, allowing easy access between rooms or between indoor and outdoor areas.

The system is made from high-quality materials that ensure durability and long-term use, providing a smooth and reliable user experience. The Kaldoor Model is suitable for a wide range of settings, including private homes, offices, restaurants, and cafes, making it an ideal choice for anyone looking to add a unique touch to their space.

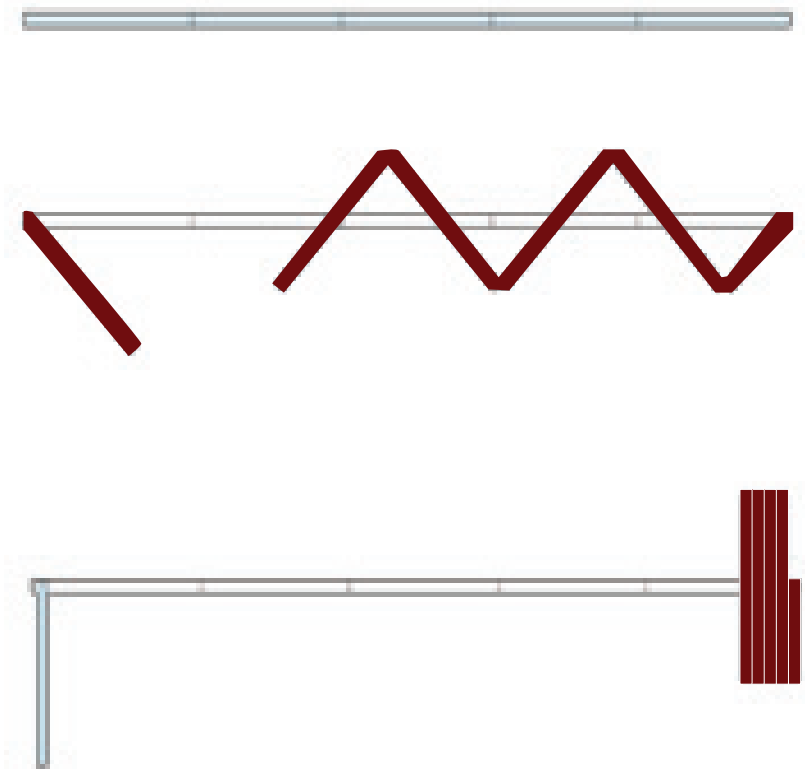
Thanks to customizable options, you can select the finishes and colors that best match your style, transforming the system into a design element that not only looks great but also seamlessly integrates with its surroundings.

Whether you're looking to upgrade your home or create a special atmosphere in your business, the Kaldoor Model is the perfect choice for enhancing your space





SPECIFICATION:



Technical Details	Description
System Height	Atrium: Max. 4000 mm Momentum: Max. 3300 mm Centrum: Max. 3300 mm
Module Widht	Atrium: Max. 1100 mm Momentum: Max. 800 mm Centrum: Max. 900 mm
Glass Types	Laminated / Tempered Single Glass
Glass Thickness	10 mm/12 mm/15 mm
Ground Lock Solutions	Semi-Automatic Lock / Manuel Lock
Lock Solutions	Glass to Glass Stainless Lock/ 150 cm Stainless Handle Lock



HORIZONTAL SLIDING WALLS MODEL *Kidma*

DESCRIPTION:

The Horizontal Sliding Walls Model Kidma is designed to seamlessly blend functionality with contemporary aesthetics. These innovative sliding walls provide an ideal solution for maximizing space while allowing for flexible room configurations.

Crafted from high-quality materials, the Kidma model ensures durability and resilience, making it suitable for both residential and commercial environments. The smooth sliding mechanism guarantees effortless operation, enabling you to easily open or close spaces as needed.

With their sleek design, the Kidma sliding walls not only enhance the visual appeal of your interiors but also offer excellent sound insulation and thermal efficiency. This ensures a comfortable atmosphere, regardless of the external conditions.

Available in various finishes and sizes, the Kidma model can be customized to match your specific design preferences and requirements. Whether you're looking to create an open-concept living area or a more private workspace, the Horizontal Sliding Walls Model Kidma provides the perfect balance of style and practicality.





GILIOTINA *System*

DESCRIPTION:

The Giliotina System offers a smart and innovative solution for space design, emphasizing flexibility and convenience. These sliding walls are crafted with advanced technology, providing not only functionality but also elegance in design.

Featuring a smooth and intuitive sliding mechanism, the Giliotina System is controlled via a remote, allowing maximum control over the opening and closing of the walls. Whether you wish to create an open space for entertaining or divide the area into private zones, this solution caters to every need.

The system is available in two configurations: the Washable model and the Upper model. The Washable model is designed so that the lower part opens using handles, facilitating easy cleaning, while the Upper model lifts upwards, allowing seamless access to the continuation of the balcony.

The walls are made from high-quality materials, ensuring durability and excellent insulation. This allows you to enjoy a quiet and pleasant atmosphere, free from external disturbances.

The Giliotina System offers numerous customization options, including various finishes and colors, enabling you to tailor it to the design style of your home or office. With this system, you achieve the perfect combination of functional design and luxury, making it an ideal choice for any space.





GLASS *Pergolas*

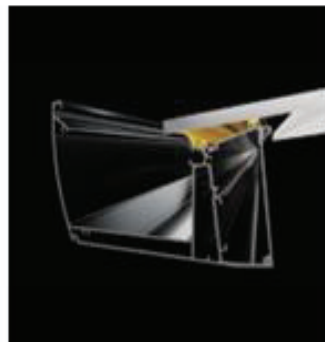
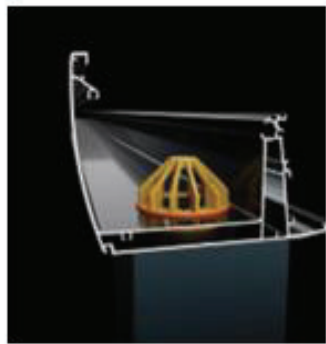
DESCRIPTION:

The veranda is a durable pergola system made with glass ceiling panels, providing protection from rain, wind, and other external elements. Designed for year-round use, it is ideal for homes, offices, and any other spaces where comfort and aesthetics are important. Its integrated gutter system effectively drains rainwater without clogging, ensuring that rainy days don't disrupt your enjoyment. Opting for the insulated model enhances thermal insulation, making it perfect for a cozy winter garden. Additionally, you can enclose your veranda using options such as zip curtains, guillotine glass, or sliding glass. LED lighting can also be added inside the veranda for a tailored ambiance.





SPECIFICATION:



Technical Details	Description
System Height	Max. 3000 mm
System Width	Between 2000 mm to 12000 mm
System Depth	Max. 4000 mm
Roof Slope	8°/Optional 0"-16"
Roof Panel Types	Laminated Glass / Heat-Insulated Glass / Tempered Glass / Polycarbonate / Sandwich Panel
LED Solutions	Spot LED / RGB LED Options
Ceiling Shutter	Could be integrated.
Solar Panel	Could be integrated.



ARM *Awning*

DESCRIPTION:

The arm awning, with its sleek design and innovative cassette mechanism, is a perfect solution for enhancing the look of areas like windows, showcases, glass fronts, balconies, and door entrances. It not only provides a stylish appearance but also protects your spaces from the sun and rain, ensuring durability by safeguarding the fabric and mechanism within its cassette structure. Designed with ease of use in mind, the automated system offers seamless operation and comes in a wide range of color options to complement any setting. allows you to control the amount of sunlight that enters, creating the ideal balance between light and shade. Furthermore, the arm awning is built to withstand various weather conditions, making it a reliable and long-lasting addition to both residential and commercial spaces.





Pergola



tent
& pergola

CAT020001274

Technical specifications

Technische Daten // Données techniques // Datos técnicos // Technische specificaties

	B8115 Block out	B8118 Cube embossing
Total Weight - ISO 2286/2:2016 Gesamtgewicht // Poids total // Peso total // Totaal gewicht		850 g/m ²
Composition Zusammensetzung // Composition // Composición // Samenstelling		PES + PVC
Fabric (Warp / Weft) - DIN ISO 2060:1994 Gewebe // Tissu // Tejido // Weefsel		PES, 1100 dtex PES, 1100 dtex
Lacquering Lackierung // Laquage // Tipo lacado // Lacquering	Top: dull non marring Bottom: dull	Top: glossy Bottom: glossy
Breaking Strength (Warp / Weft) - ISO 1421/1:2016 Hochstzugkraft // Résistance rupture // Resistencia a la tracción // Treksterkte		2500 N/5cm 2300 N/5cm
Tear Strength (Warp / Weft) - DIN 53363:2003 Weiterreisskraft // Résistance à la déchirure // Resistencia al desgarro // Scheurweerstand		270 N 270 N
Adhesion - ISO 2471:2017 Haftung // Adhérence // Adhesión // Hechting		100 N/5cm
Temperature resistance - EN 1876/1:1998 Temperaturbeständigkeit // Tenue à la température // Resistencia térmica // Temperatuurbestendigheid		-40/+70 °C
Light Fastness - ISO 105 B02:2014 Lichtechtheid // Tenue à la lumière // Solidez color // Lichtechtheid		7-8
Fire Behaviour Brandverhalten // Reaction au feu // Resistencia al fuego // Brandgedrag	(UNI 8456 - 9174) ADR Cl. II	(NF P92-507:2004) M2
Reaction to Fire - EN 13501-1:2018 Reaktion auf Feuer // Reaction au feu // Reacción al fuego // Reactie op vuur		B-s2,d0



Registration,
Evaluation,
Authorization
and restriction
of Chemicals



Recyclable fabric
Recyclable textile
Textiles recyclables
Productos reciclables
Recyclebaar textiel



Slitting (width) on request
Schneiden (Breite) auf Anfrage
Tronçonnage (largeur) sur demande
Cortar (ancho) bajo pedido
Snijden (breedte) op aanvraag



Sustainable options available
Nachhaltige Optionen verfügbar
Options durables disponibles
Opciones sostenibles disponibles
Duurzame opties beschikbaar

SCIEN



your guide to coated fabrics

Go to scienc.com for more information.
Fabrieksstraat 23 - 8850 Ardooie - Belgium
+32 (0) 51 740 900 - info@scienc.com - scienc.com



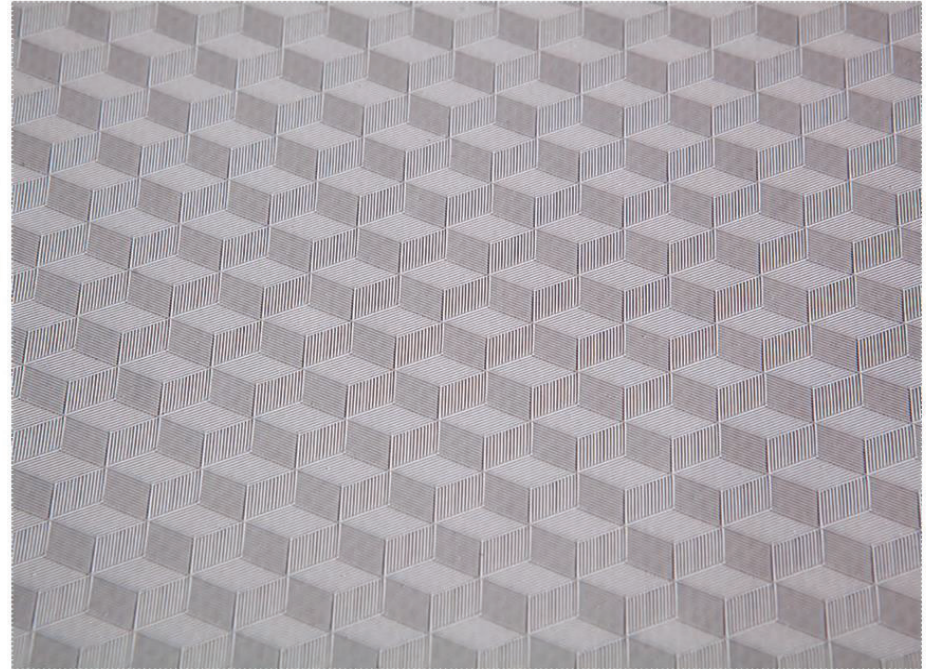
Produced in Belgium & France in ISO 9001:2015 certified plants



All our technical characteristics are indicative. Please note that all information given in this document is provided to be useful and informative and is correct to the best of our knowledge at time of print. No liability can be accepted for inaccuracies or omissions. All Scienc products comply with the REACH regulation (EC/1831/2003). Last modified: 4 maart 2024 1:40 p.m.

B8118

Cube embossing // Würfelfprägung // Gaufrage en cube // Acabado en cubo // Kubus embossing



1622

300 cm



7024

300 cm



7340

300 cm



7500

300 cm



9002

300 cm



REMOTES

All of our motorized products can be controlled by remote controls or by application in supported systems.

In order to enjoy our products more, you can choose the types of controls that appeal to you



PRODUCT CRATING

As we protect our products with wooden crates specially produced in industrial standards in accordance with customer demands. These crates can be diversified as fully closed, spaced or open pallets. Designed to provide convenience and superior protection during the transportation process, these special crates aim to transport the products safely and minimize the risk of damage during transportation, in this way, we deliver our products reliably at every stage to our customers all over the world.



COLORS AND FABRIC TYPES

In order for our products to appeal to you more, you can customize them on the RAL color chart

In addition, you can choose from dozens of fabric alternatives as per your intended use and requirements





PERGEDGE
ADVANCED SHADING SYSTEMS

OUTDOOR DESIGN SOLUTION



CONTACT US

+359878348841

www.pergedge.com

Pergedge2000@gmail.com

Burgas, Bulgaria, Dolno Ezerovo
Quarter, Kravarnika Area.

SCAN ME

