



TECHNICAL SPECIFICATIONS

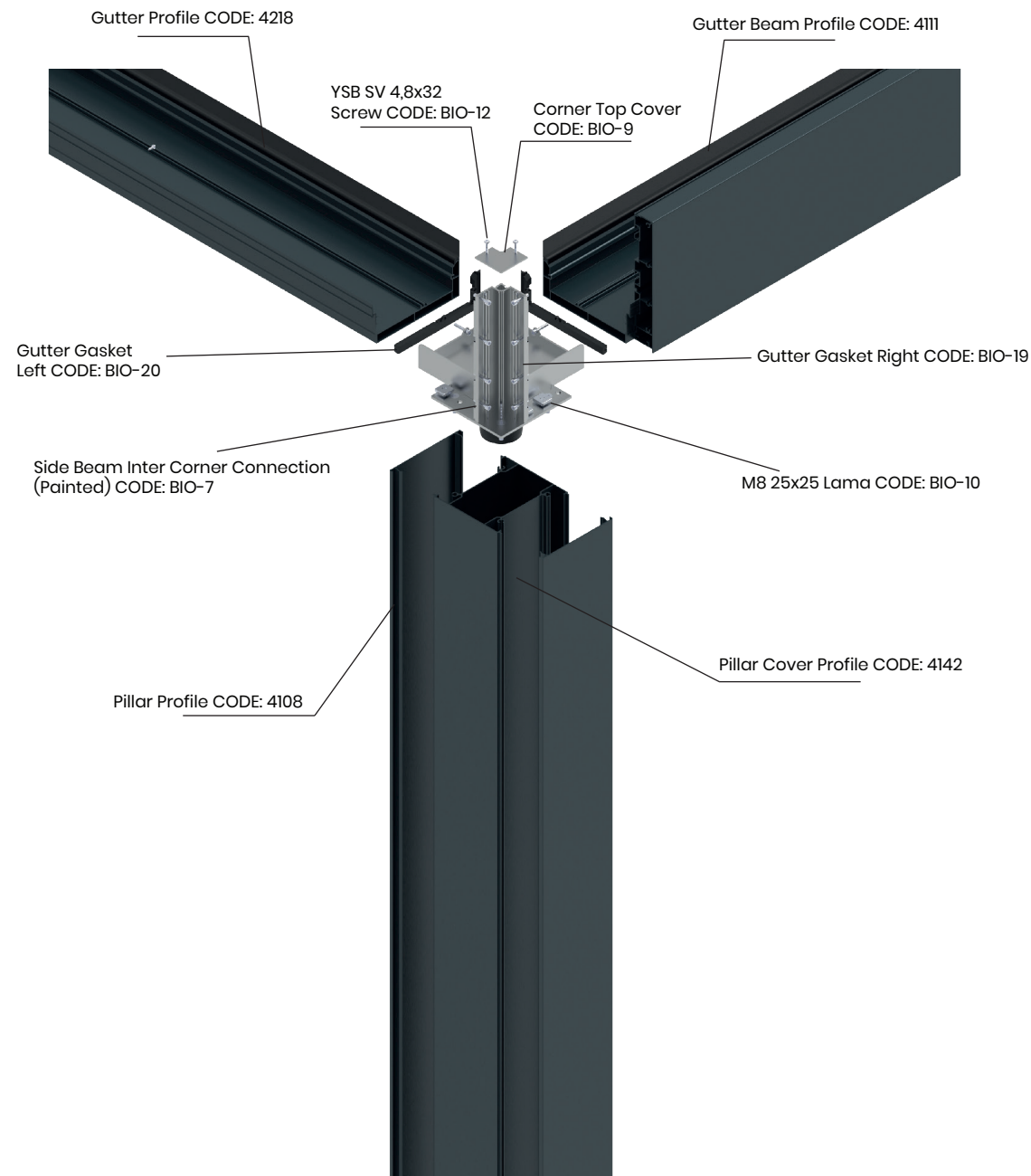
FOR THE BIOCLIMATIC PERGOLA

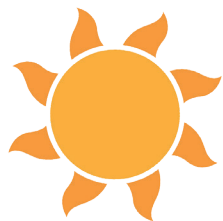


BIOCLIMATIC SYSTEMS

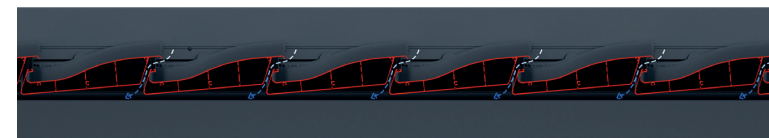
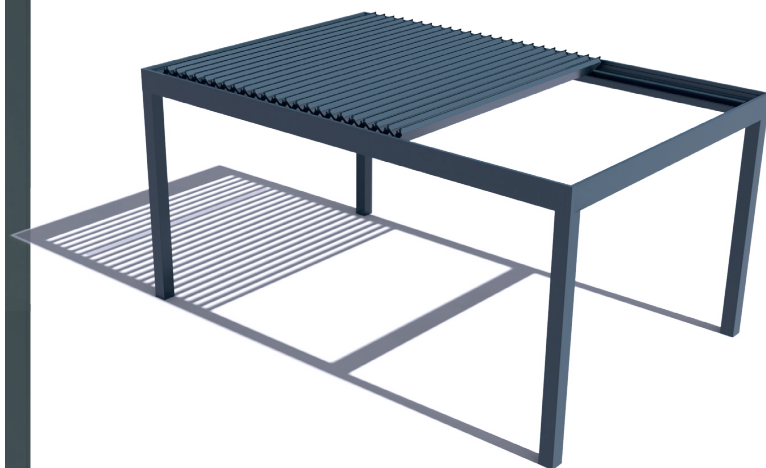
The **Bioclimatic System** offers year-round outdoor comfort with its high durability and aesthetic design, meeting the requirements of modern architecture. Its specially designed retractable panels provide the ability to control sunlight, ventilation, and shading.

With its integrated **rainwater drainage system and durable profiles**, the system ensures long-lasting use while delivering natural climate control for improved energy efficiency. Its stylish and functional design adds value to living spaces such as terraces, gardens, cafés, and restaurants. Optional integrations such as lighting, heating, automation, and glass enclosure systems provide an enhanced level of living comfort.



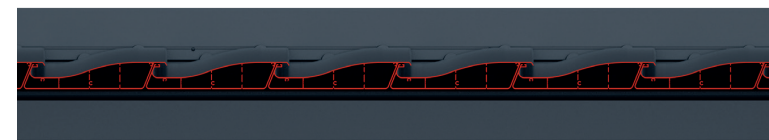
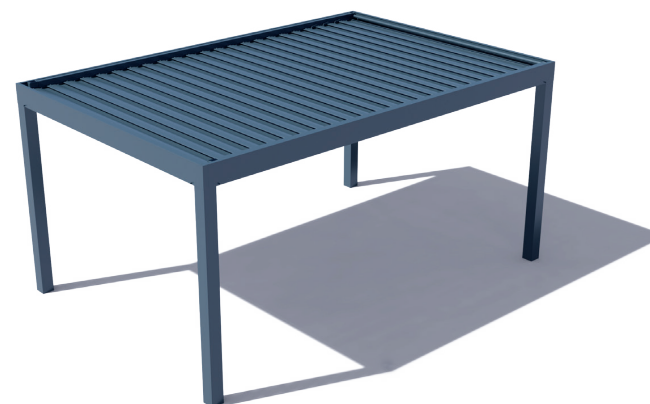


ALLOWS THE USE OF SUNLIGHT



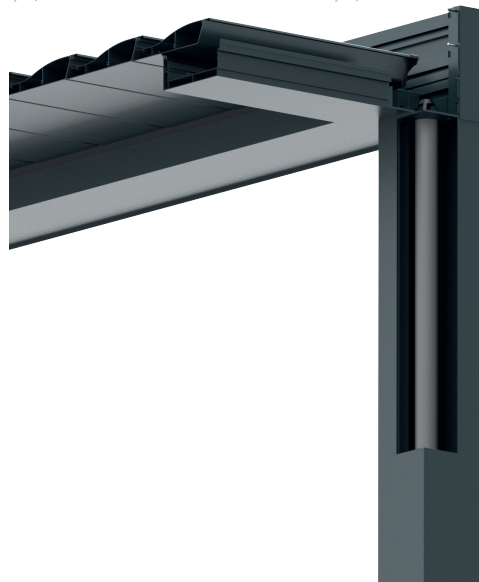
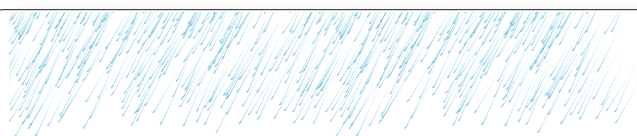
5°

EVEN IF IT'S RAINING OR SNOWING, IT ALLOWS FOR THE VENTILATION OF THE AREA.



0°

THE SLATS REMAINING CLOSED PROVIDES PROTECTION FROM ALL WEATHER CONDITIONS.



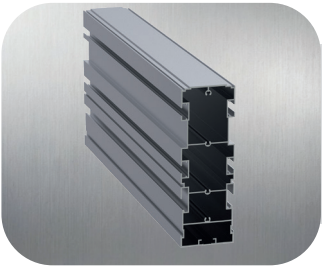
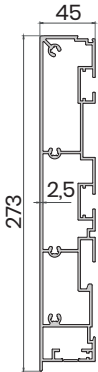
RAINWATER DRAINAGE SYSTEM

THE BIOCLIMATIC SYSTEMS ARE DESIGNED TO COLLECT RAINWATER. THE WATER IS DIRECTED FROM THE PANELS TO THE GUTTERS. THE COLLECTED WATER IS TRANSFERRED TO THE OUTSIDE THROUGH THE VERTICAL PROFILE. TO FACILITATE THE DISCHARGE OF RAINWATER, A NOTCH PROCESS IS APPLIED TO BOTH THE GUTTER PROFILE AND THE VERTICAL PROFILE.

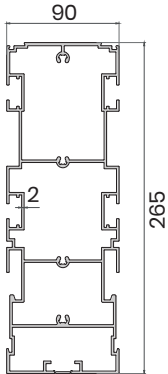
Bioclimatic Systems Common Profiles
(CASTOR GOLD,VEGA SILVER,CAPELLA,DIAMOND)



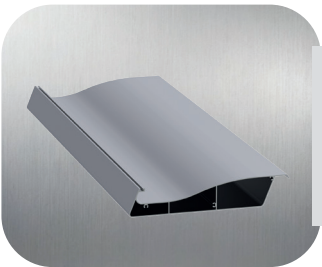
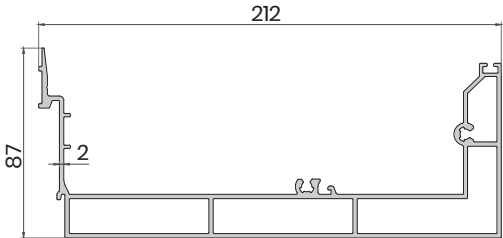
GUTTER BEAM PROFILE	
Product Code	4111
Weight	5,721 kg/m



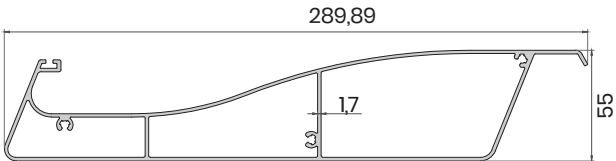
MIDDLE GUTTER BEAM PROFILE	
Product Code	4120
Weight	7,366 kg/m

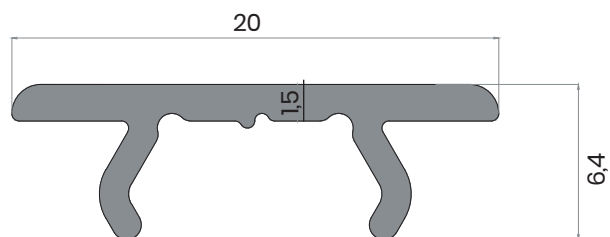
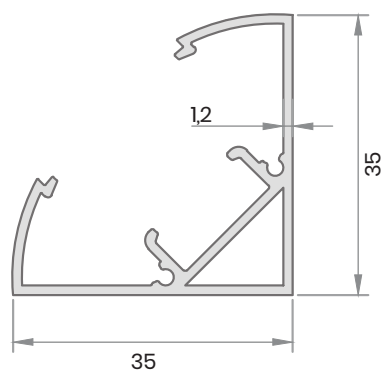
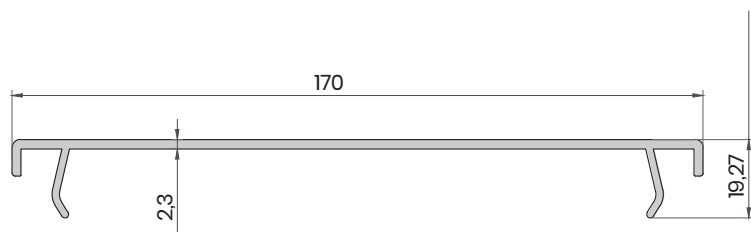
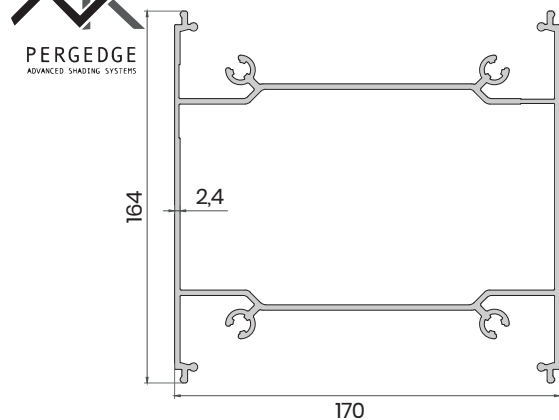


GUTTER PROFILE	
Product Code	4218
Weight	3,940 kg/m



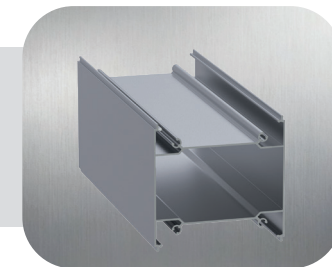
PANEL PROFILE	
Product Code	4109
Weight	3,553 kg/m





PILLAR PROFILE

Product Code	4108
Weight	5,368 kg/m



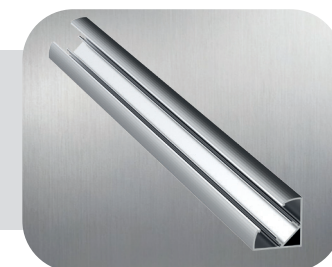
PILLAR COVER PROFILE

Product Code	4122
Weight	1,309 kg/m



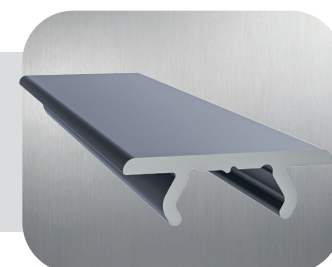
LED PROFILE

Product Code	2953
Weight	0,445 kg/m

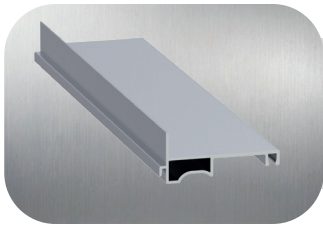


GUTTER POST COVER

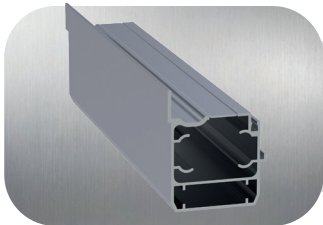
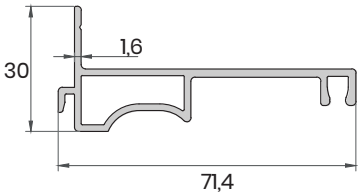
Product Code	4699
Weight	0,111 kg/m



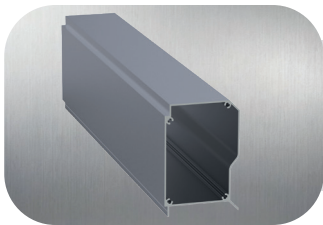
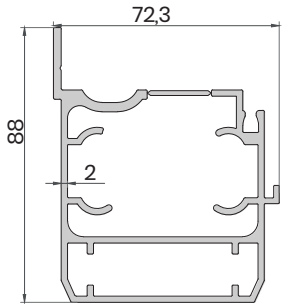
Castor Gold (Scissors) System Profiles
(CASTOR GOLD,VEGA SILVER,CAPELLA,DIAMOND)



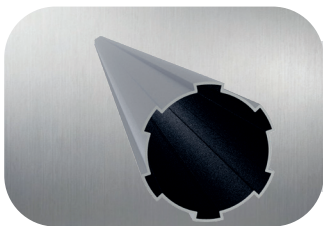
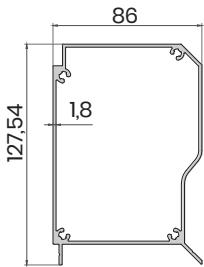
RAIL COVER PROFILE	
Product Code	4128
Weight	0,724 kg/m



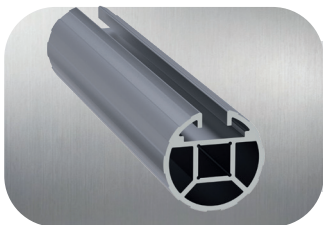
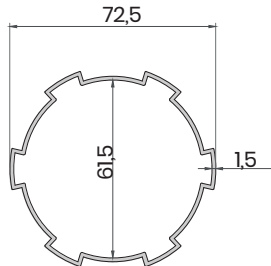
RAIL PROFILE	
Product Code	4113
Weight	2,439 kg/m



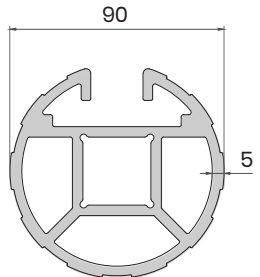
MOTOR BOX PROFILE	
Product Code	4110
Weight	2,317 kg/m

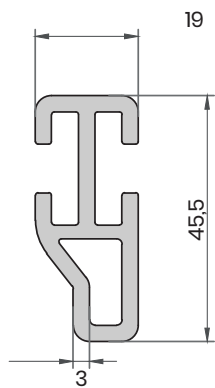


MOTOR TUBE PROFILE	
Product Code	37115
Weight	0,992 kg/m



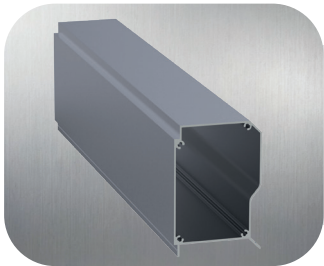
SHAFT PROFILE	
Product Code	4115
Weight	1,417 kg/m



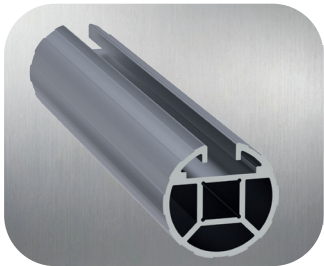
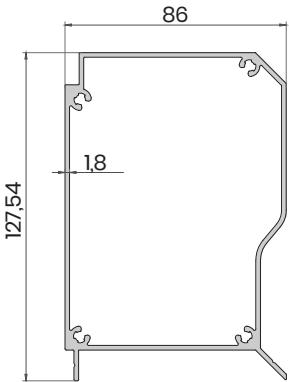


TILT DRIVE PROFILE	
Product Code	4118
Weight	1,501 kg/m

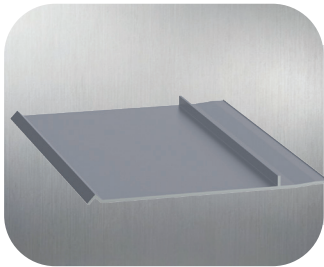
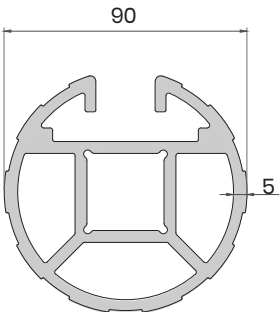




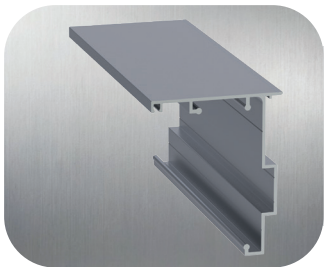
MOTOR BOX PROFILE	
Product Code	4110
Weight	2,317 kg/m



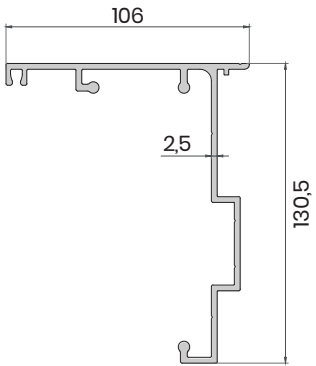
SHAFT PROFILE	
Product Code	4115
Weight	1,417 kg/m

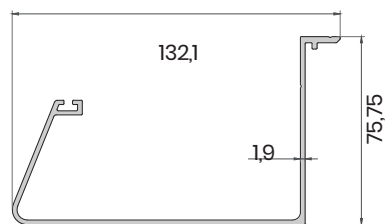


GUTTER COVER FRONT PROFILE	
Product Code	4124
Weight	1,862 kg/m



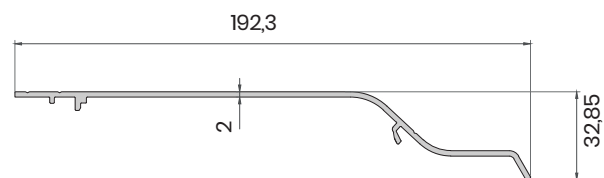
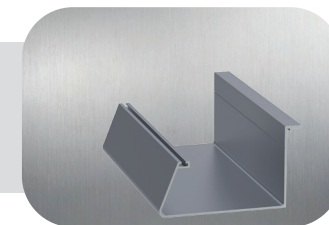
GEARBOX RAIL PROFILE	
Product Code	4123
Weight	2,228 kg/m





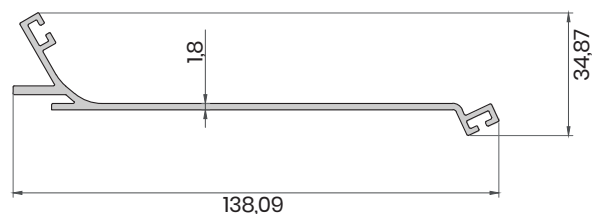
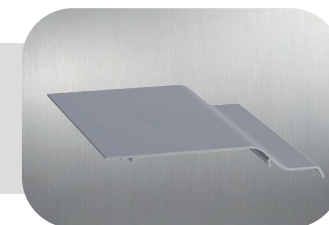
REAR FIXED PANEL GUTTER PROFILE

Product Code	4125
Weight	1,442 kg/m



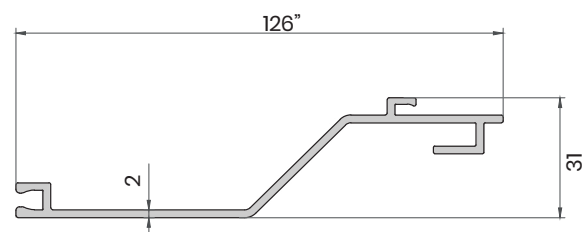
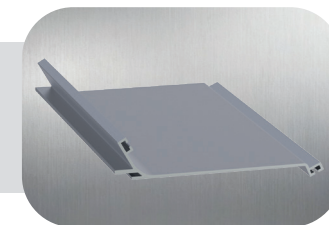
FIXED PANEL COVER PROFILE WITH MOTOR DIRECTION PROFILE

Product Code	4114
Weight	1,190 kg/m



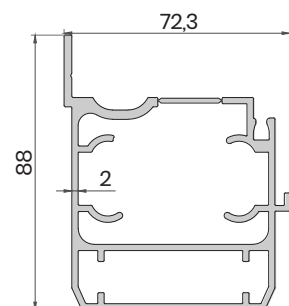
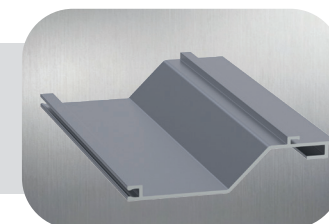
MOVABLE GUTTER PROFILE

Product Code	4126
Weight	0,962 kg/m



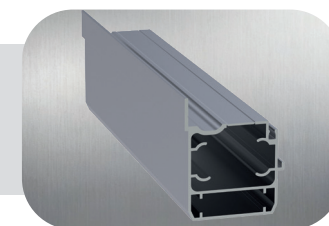
BOTTOM BRUSH PROFILE

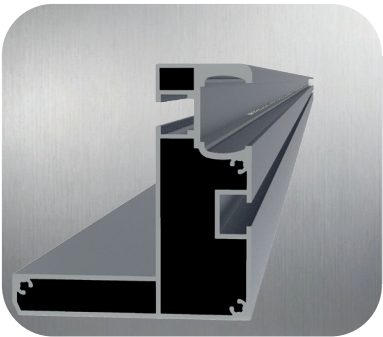
Product Code	4127
Weight	0,973 kg/m



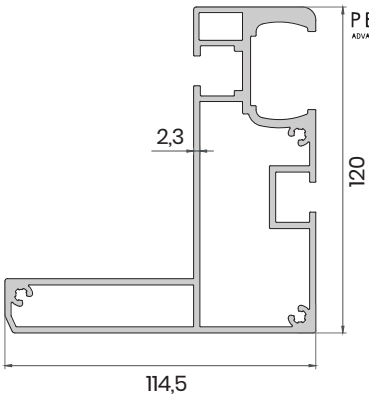
RAIL PROFILE

Product Code	4113
Weight	2,439 kg/m

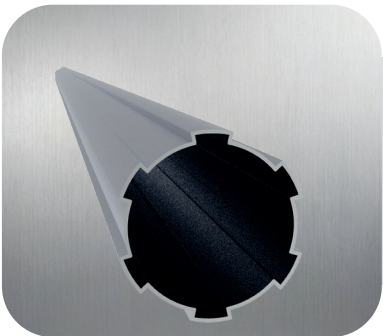
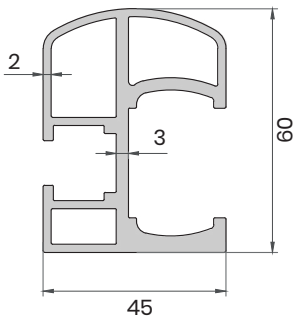




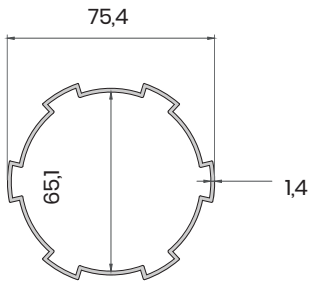
INNER RAIL PROFILE	
Product Code	4151
Weight	3,862 kg/m

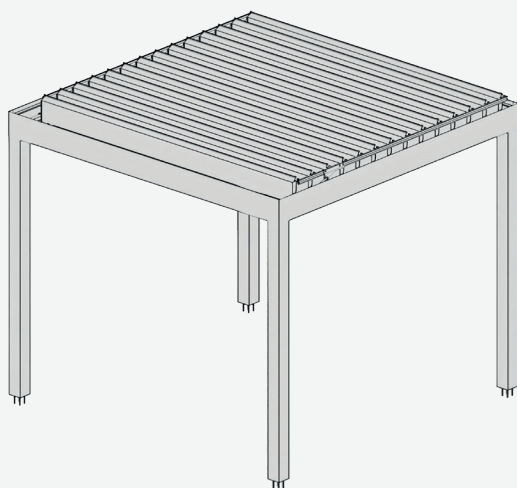


C CHANNEL PROFILE	
Product Code	4152
Weight	1,810 kg/m



MOTOR TUBE PROFILE	
Product Code	5312
Weight	1,000 kg/m

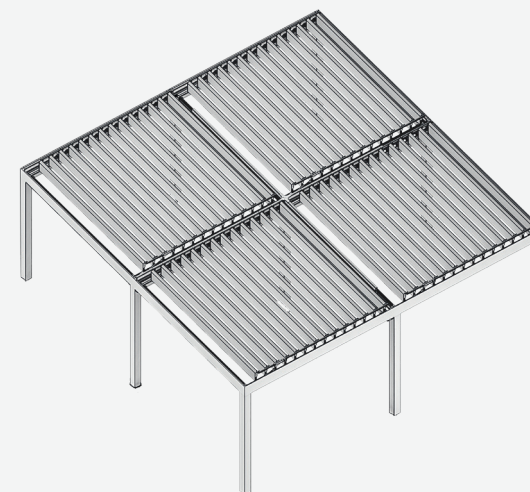




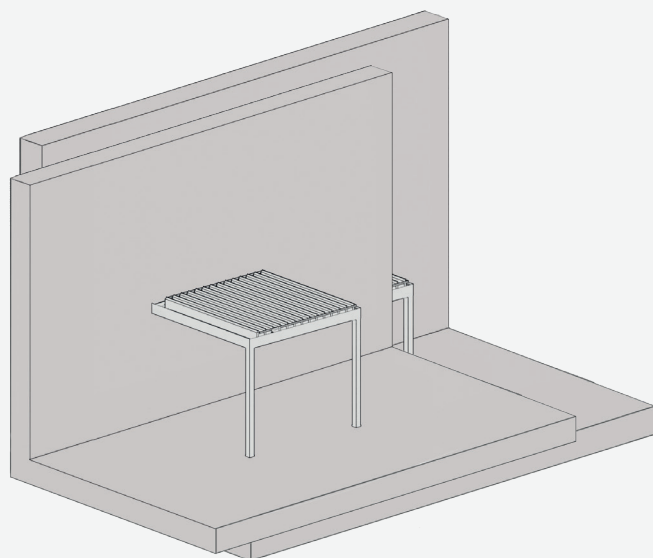
SINGLE SYSTEM



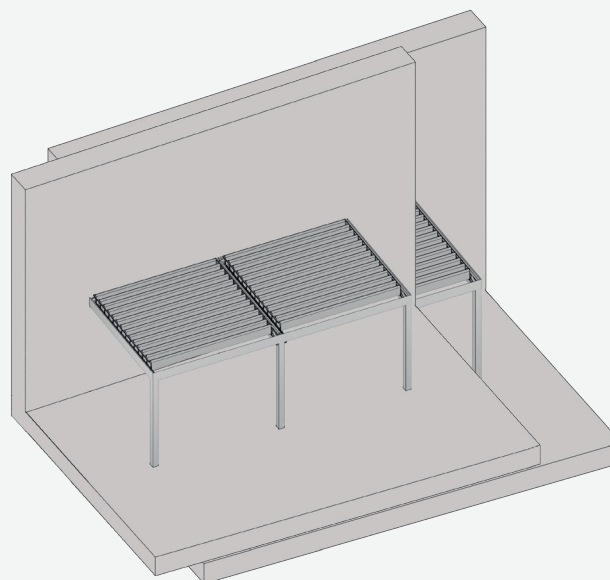
BIOCLIMATIC DOUBLE SYSTEM



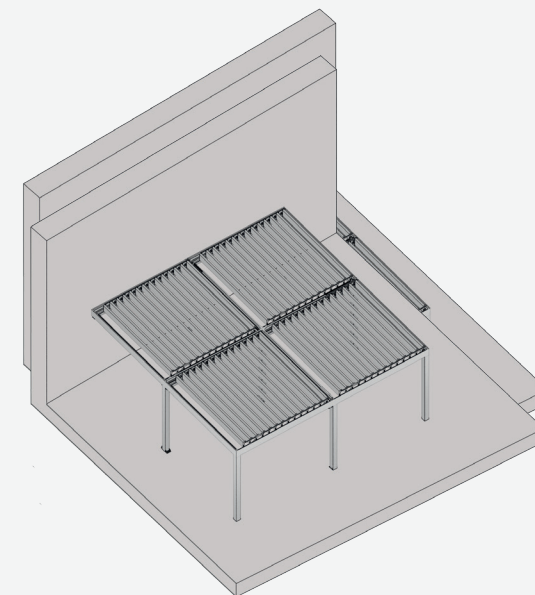
BIOCLIMATIC MULTIPLE SYSTEM



BIOCLIMATIC SINGLE SYSTEM



BIOCLIMATIC DOUBLE SYSTEM



BIOCLIMATIC MULTIPLE SYSTEM